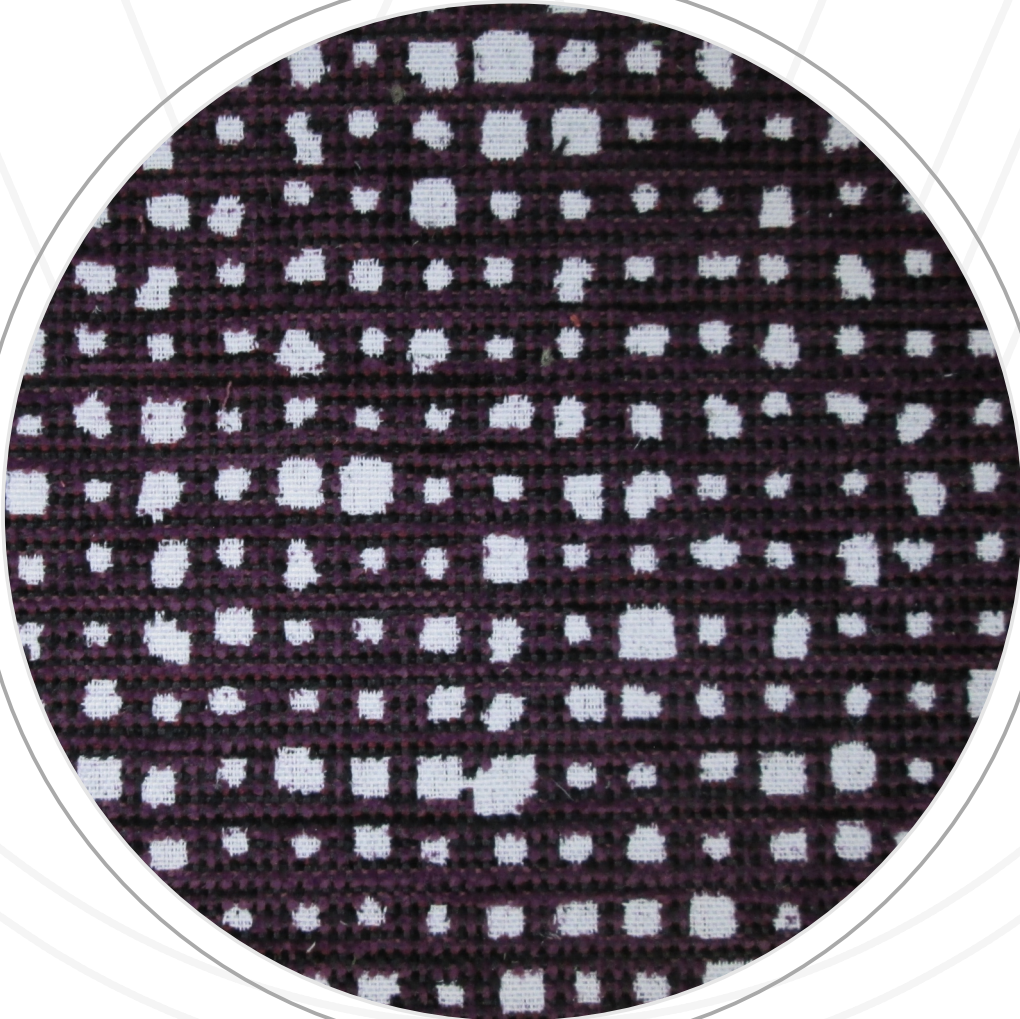




WeaversWorld

TRITON MORPHEUS

05



VIEW ONLINE

TRITON » MORPHEUS » 05

Photographic fabric scans are not colour accurate. Always request actual fabric samples before ordering.

SPECIFICATIONS

Application:	Upholstery
Composition:	44% Olefin, 28% Polyester, 28% Acrylic
Width:	140 cm
Mass:	478gm/1m
Pattern Repeat	Plain
Complies To:	SABS 1324 Contract Specification

	STANDARD	TRITON
Abrasion Resistance:	+25 000 Rubs	45 000 Rubs
Colour Fastness:		
To Light	5	5
To Rubbing	4	4
To Pilling	4	4
Seam Slippage:		
Warp	180N	+180N
Weft	180N	+180N
Tensile Strength:		
Warp	400N	+400N
Weft	400N	+400N
Cleaning Instructions:	Professional Cleaning	

NOTES: Refer to SABS 726 - This specification calls for a minimum seam of 15mm and 4-5 stitches per cm. Shade variations may differ from batch to batch. Please check before cutting as cut fabric is non-returnable.

WWW.WEAVERSWORLD.CO.ZA

