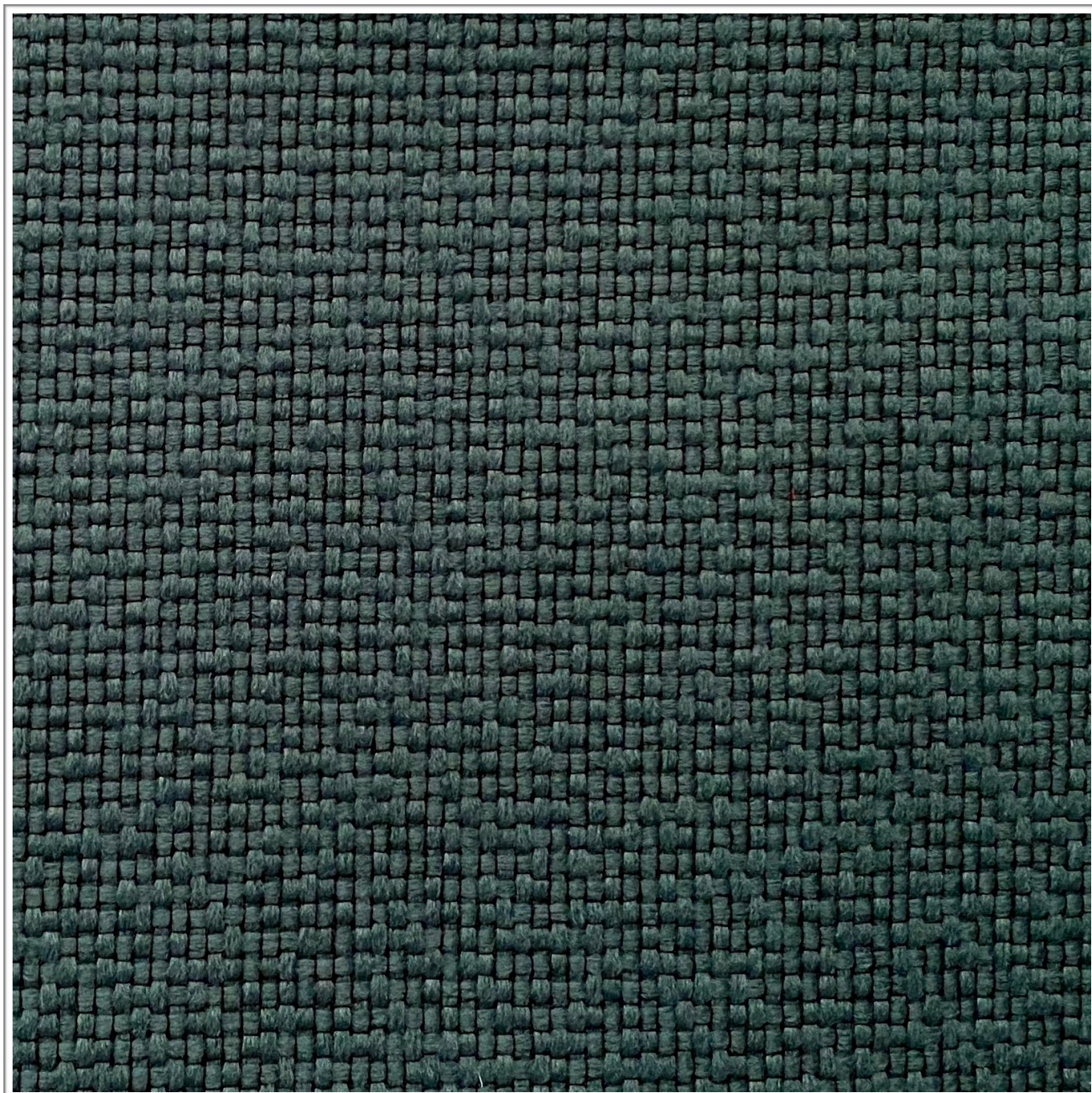


PIXEL
COLUMBIA

Weavers
World



Photographic fabric scans are not colour accurate. Always request actual fabric samples before ordering.

SPECIFICATIONS

Application		Upholstery	
Composition		100% PES	
Width		142cm	
Mass		516 gm/lm	
Complies To		SABS 1324 Contract Specification	
		STANDARD	PIXEL
Abrasion Resistance		25,000 Rubs	+35,000
Colour Fastness			
To Light		6	4-5
To Rubbing		4	4
To Pilling		4	4-5
Seam Slippage:	WARP	180N	+180N
	WEFT	180N	+180N
Tensile Strength:	WARP	400N	1407N
	WARP	400N	1213N
Cleaning Instructions:		PROFESSIONAL CLEANING	

NOTE: Refer to SABS 726 - This specification calls for a minimum seam of 15mm and 4-5 stitches per cm.