

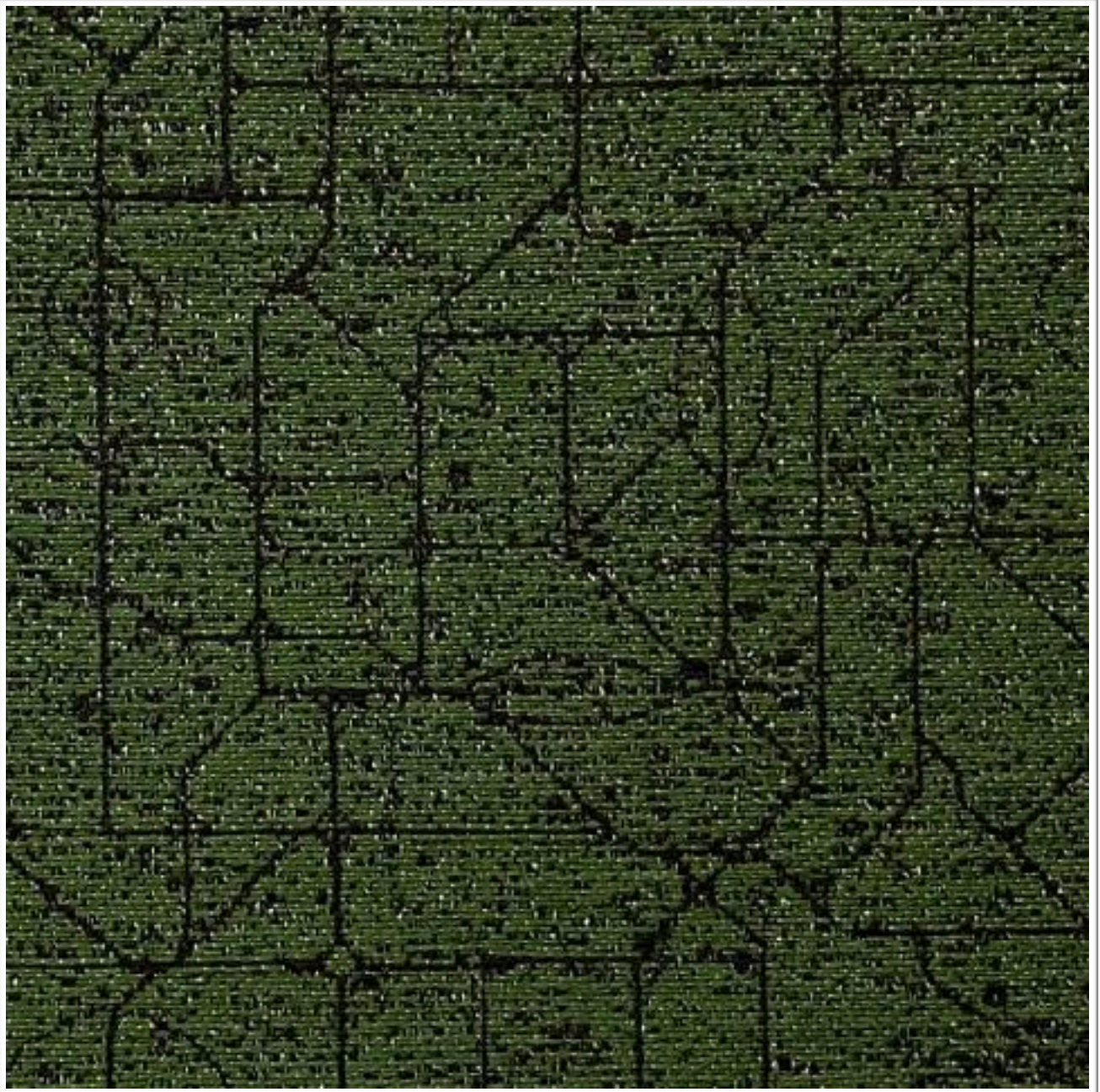
# **NETWORK**

## **SYGMA**

---

# **Weavers**

## **World**



Photographic fabric scans are not colour accurate. Always request actual fabric samples before ordering.

# SPECIFICATIONS

<b>Application</b>	<b>Upholstery</b>
<b>Composition</b>	<b>100% Upholstery</b>
<b>Width</b>	<b>148cm</b>
<b>Mass</b>	<b>563 gm/lm</b>
<b>Pattern Repeat</b>	<b>37 x 26 cm</b>
<b>Complies To</b>	<b>SABS 1324 Contract Specification</b>

---

		<b>STANDARD</b>	<b>NETWORK</b>
<b>Abrasion Resistance</b>		<b>25,000 Rubs</b>	<b>+50,000</b>
<b>Colour Fastness</b>			
<b>To Light</b>		<b>6</b>	<b>5-6</b>
<b>To Rubbing</b>		<b>4</b>	<b>4</b>
<b>Seam Slippage:</b>	<b>WARP</b>	<b>180N</b>	<b>+180N</b>
	<b>WEFT</b>	<b>180N</b>	<b>+180N</b>
<b>Tensile Strength:</b>	<b>WARP</b>	<b>400N</b>	<b>+400N</b>
	<b>WARP</b>	<b>400N</b>	<b>+400N</b>
<b>Cleaning Instructions:</b>	<b>PROFESSIONAL CLEANING</b>		

**NOTE: Refer to SABS 726 - This specification calls for a minimum seam of 15mm and 4-5 stitches per cm.**