

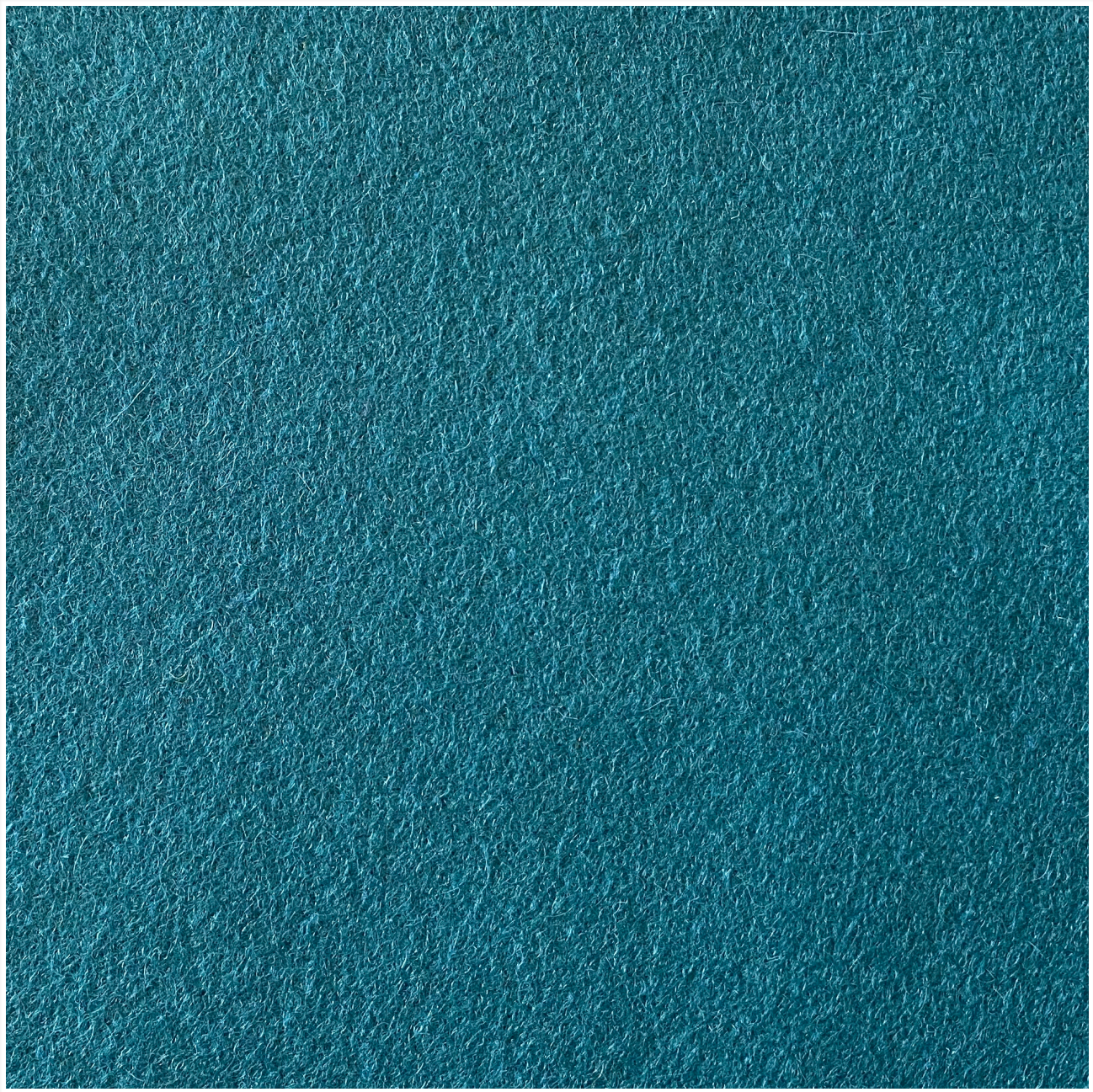
# **BLAZER**

## **SHORE**

---

# **Weavers**

## **World**



Photographic fabric scans are not colour accurate. Always request actual fabric samples before ordering.

## SPECIFICATIONS

<b>Application</b>	<b>Upholstery</b>
<b>Composition</b>	<b>100% Pure New Wool - Non Metallic Dyestuffs</b>
<b>Width</b>	<b>140cm Minimum</b>
<b>Mass</b>	<b>460gm/m<sup>2</sup> +/-5% (645g/lin.min +/-5%)</b>
<b>Pattern Repeat</b>	<b>Plain</b>

---

### BLAZER

<b>Abrasion Resistance</b>	<b>+50,000 Martindale Cycle</b>
<b>Colour Fastness</b>	<b>5 (ISO 105-B02: 1999)</b>
<b>To Light</b>	
<b>To Rubbing</b>	<b>Wet:4 Dry:4 (ISO 105-X12:2002)</b>
<b>Flammability</b>	<b>BS EN 1021 -1: 2006 (CIGARETTE), BS EN 1021-2: 2006 (MATCH) BS 7176:2007 LOW HAZARD, UNI 9175 CLASSE1 IM (FR PU 35KG) OPTIONAL - PLEASE SPECIFY WHEN ORDERING BS 5852:2006 SECTION R IGNITION SOURCES WHEN FR TREATED BS 7176:2007 MEDIUM HAZARD WHEN FR TREATED NOTE: FLAMMABILITY PERFORMANCE IS DEPENDENT ON FOAM</b>
<b>Cleaning Instructions:</b>	<b>VACUUM REGULARLY. PROFESSIONAL DRY CLEAN OR WIPE CLEAN</b>

**NOTE: Refer to SABS 726 - This specification calls for a minimum seam of 15mm and 4-5 stitches per cm.**